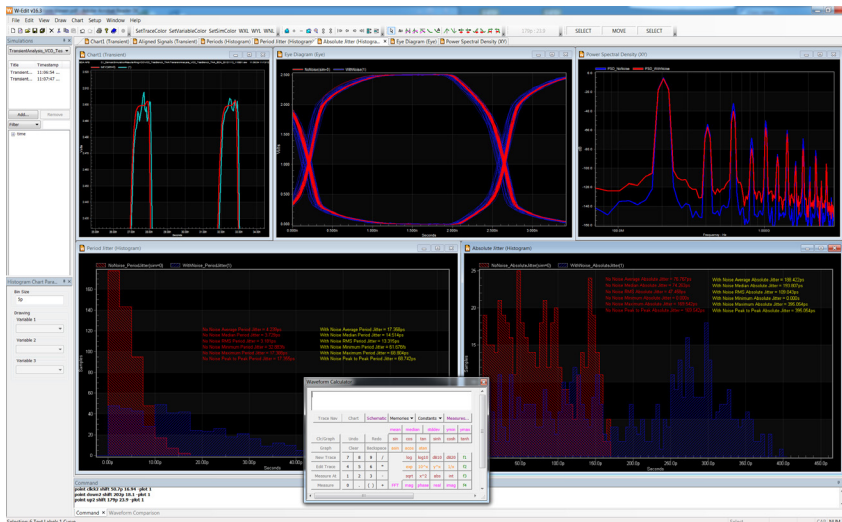


# Tanner Waveform Viewer



*Tanner Waveform Viewer displays ring VCO output without and with transient noise; the tool's multiple-window, multiple chart interface allows for easy viewing of waveforms and data.*

## Multiple-Window Interface for Easy Viewing of Waveforms

The Tanner Waveform Viewer analysis tool (formerly known as W-Edit) is a comprehensive viewer for displaying, comparing and analyzing simulation results. Tanner Waveform Viewer provides an intuitive multiple-window, multiple-chart interface for easy viewing of waveforms and data in highly configurable formats.

- Tanner Waveform Viewer is dynamically linked to Tanner T-Spice simulator and Tanner S-Edit schematic capture with a dynamic update feature that displays simulation results as they are being generated and allows waveform cross-probing directly in the schematic editor for faster design cycles.
- Focus on and optimize your design with Tanner Waveform Viewer's advanced features such as automatically calculating and displaying FFT results in a variety of formats, including removing DC and different windowing functions.

## Analysis Platform

Tanner Waveform Viewer is not just a waveform viewer, but also offers a robust analysis platform featuring built in measurements that can be applied to selected traces including delay, risetime, falltime, frequency, jitter, pulse width, gain, phase margin, baseline, slew rate, period, cpk, yield, groupdelay, rms and settling time.

## FEATURES AND BENEFITS:

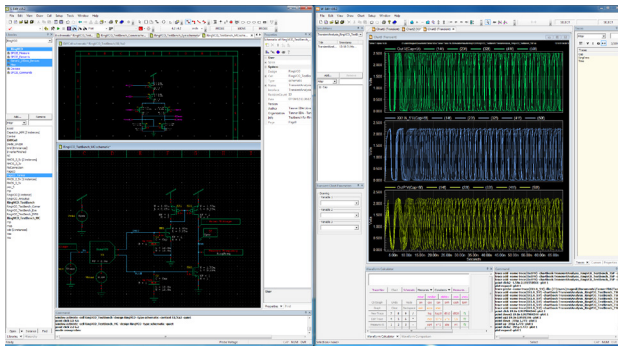
- Visualize complex numerical data with ease of use, power and speed through a flexible user interface
- Save current chart setups in a work spaces to reuse with scriptable chart construction and trace calculation, and easy to export presentation-quality graphics
- Display simulation waveforms in real-time while the simulation is running
- Cross-probing from Tanner S-Edit to display waveforms
- Analysis platform featuring built-in measurements that can be applied to selected traces
- Create new traces from arithmetic expressions of other traces using a calculator-style wizard for arguments and syntax
- View multiple simulation results simultaneously
- Automate chart setup or special calculates using TCL scripts
- Handles large data files quickly and efficiently

## Arithmetic Traces

Tanner Waveform Viewer supports the ability to create new traces from arithmetic expressions of other traces using a calculator-style wizard for arguments and syntax. Newly created arithmetic traces can be saved in the Tanner Waveform Viewer chartbook.

## Multiple Simulations

Tanner Waveform Viewer supports concurrent simulation and curve viewing so the results of multiple simulations can be plotted together for comparison and measurements. You can load and view multiple simulations from different output files in one or more chart windows, and traces can be copied between charts.



Tanner Waveform Viewer can be accessed from Tanner S-Edit for simulations; here, a display of transient analysis for a ring VCO from within S-Edit.

## Programmable

Tanner Waveform Viewer is fully programmable with TCL so you can write scripts to automate routine tasks, such as results analysis, trace depiction or complex calculations.

## Performance

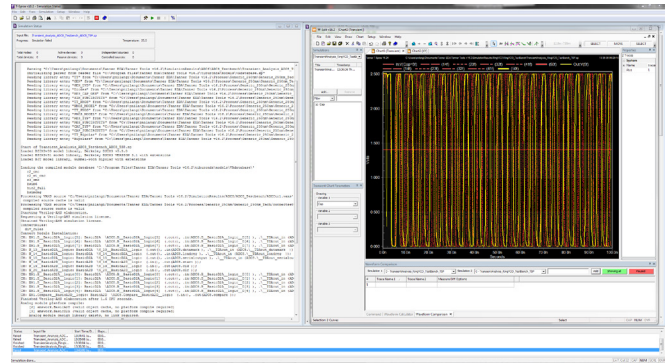
Tanner Waveform Viewer performance and capacity can handle the large data files quickly and efficiently. The Trace navigator can display traces in a flat or hierarchical view, with filters that include wildcards and regular expressions.

## Chartbooks

Tanner Waveform Viewer creates chartbooks that save all the chart setup information as well as arithmetic traces and analysis. Succeeding simulation can be added to the chartbook for comparison or they can use the chartbook to format the waveforms and display measurements.

## Intuitive User Interface

All Tanner applications present a clear and intuitive Windows interface that is easy to learn and use. Tanner Waveform Viewer includes a drag-and-drop feature for placing traces in a chart, full control over curve display aspects such as color, line weight, visibility, scaling, and multiple cursor types.



Above, simulation results are displayed within Tanner Waveform Viewer as they are being generated. The tool is intuitive, easy to learn and customizable, giving users full control over curve display aspects such as color, line weight and scaling.

For the latest product information, contact us at: [www.mentor.com](http://www.mentor.com), (800) 547-3000

©2015 Mentor Graphics Corporation, all rights reserved. This document contains information that is proprietary to Mentor Graphics Corporation and may be duplicated in whole or in part by the original recipient for internal business purposes only, provided that this entire notice appears in all copies. In accepting this document, the recipient agrees to make every reasonable effort to prevent unauthorized use of this information. All trademarks mentioned in this document are the trademarks of their respective owners.

**Corporate Headquarters**  
Mentor Graphics Corporation  
8005 SW Boeckman Road  
Wilsonville, OR 97070-7777  
Phone: 503.685.7000  
Fax: 503.685.1204

**Sales and Product Information**  
Phone: 800.547.3000  
sales\_info@mentor.com

**Silicon Valley**  
Mentor Graphics Corporation  
46871 Bayside Parkway  
Fremont, CA 94538 USA  
Phone: 510.354.7400  
Fax: 510.354.7467

**North American Support Center**  
Phone: 800.547.4303

**Europe**  
Mentor Graphics  
Deutschland GmbH  
Arnulfstrasse 201  
80634 Munich  
Germany  
Phone: +49.89.57096.0  
Fax: +49.89.57096.400

**Pacific Rim**  
Mentor Graphics (Taiwan)  
11F, No. 120, Section 2,  
Gongdao 5th Road  
HsinChu City 300,  
Taiwan, ROC  
Phone: 886.3.513.1000  
Fax: 886.3.573.4734

**Japan**  
Mentor Graphics Japan Co., Ltd.  
Gotenyama Garden  
7-35, Kita-Shinagawa 4-chome  
Shinagawa-Ku, Tokyo 140-0001  
Japan  
Phone: +81.3.5488.3033  
Fax: +81.3.5488.3004

**Mentor Graphics**

MGC 09-15 1033570-w